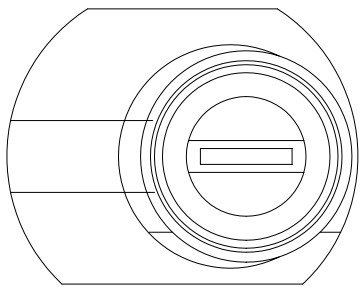
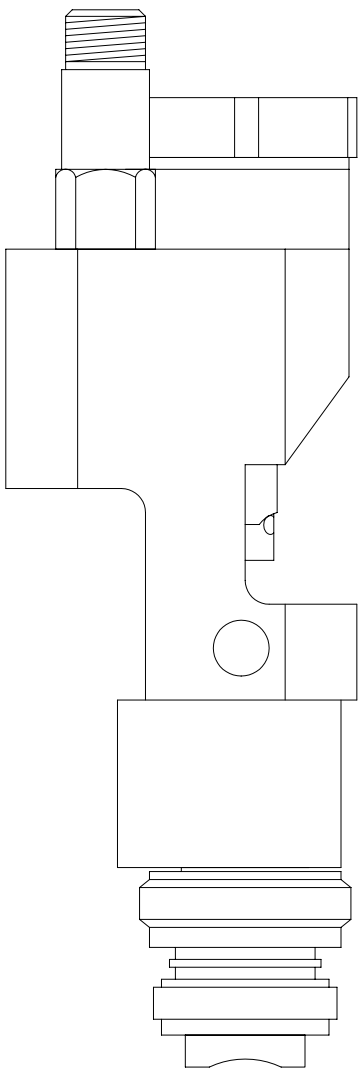
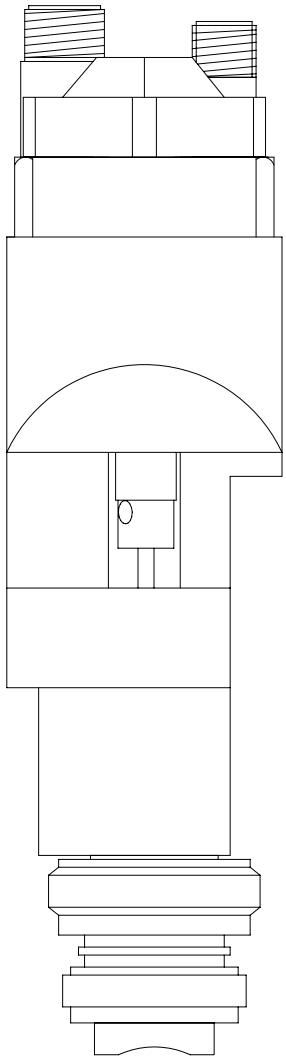
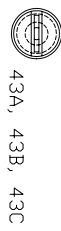
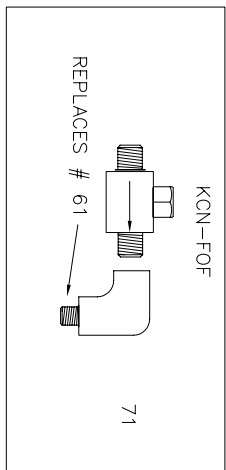
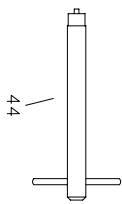
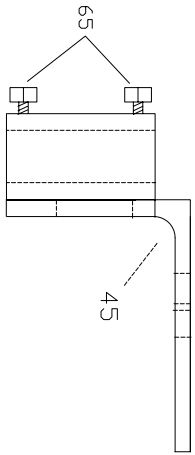
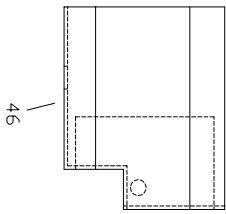


| DATE | SYM | REVISION | AUTH | DR | CK |
|------|-----|----------|------|----|----|
|      | A   |          |      |    |    |
|      | B   |          |      |    |    |
|      | C   |          |      |    |    |
|      | D   |          |      |    |    |
|      | E   |          |      |    |    |



|                 |        |                           |      |
|-----------------|--------|---------------------------|------|
| TOLERANCES      |        | Kelly-Creswell            |      |
| DECIMAL         |        | Company Inc., Xenia, Ohio |      |
| XXX             | +/-01  | MATERIAL AND FINISH       |      |
| XXX             | +/-005 | SCALE                     |      |
| ANGULAR         |        | DRAWN BY JPS              |      |
| +/-1 deg        |        | APPROVED BY               |      |
| TITLE           |        |                           |      |
| NAUTILUS 3 VIEW |        |                           |      |
| DATE            | SIZE   | DRAWING NUMBER            | REV. |
| 11/05           | A      | 3 VIEW                    |      |

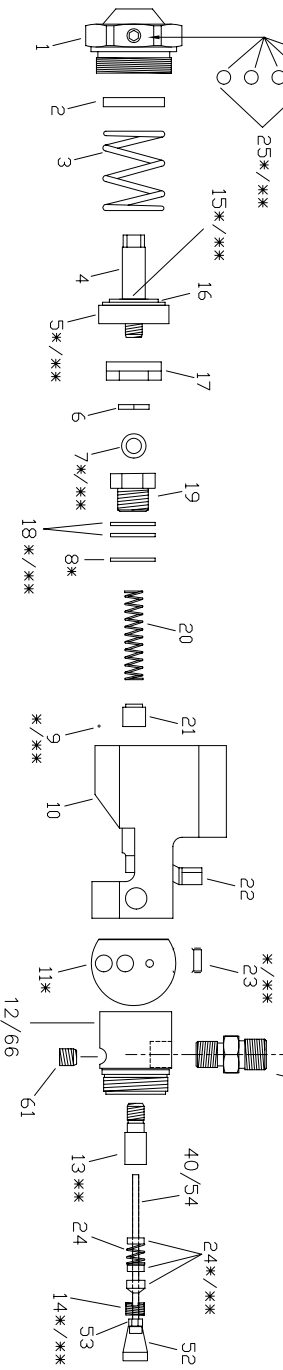
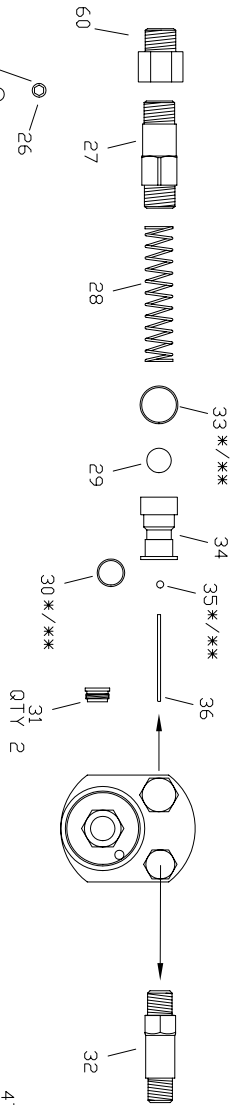
PARTS FOR HANGER NOT PICTURED  
 KCN-099 BOLT QTY 2 REF 62  
 40384 LOCK WASHER QTY 2 REF 63  
 40358 FLAT WASHER QTY 2 REF 64



KCN-S01



REPLACES # 39



NOTES:  
 \* INCLUDED IN REPAIR KIT KCN-15-RBK  
 \*\* INCLUDED IN REPAIR KIT KCN-20-RBK

| NO.   | REV. | DESCRIPTION | DATE | BY |
|---|------|-------------|------|----|
| 1   |      | ISSUE       |      |    |
| TITLE: NAUTILUS - TRUCK MOUNTED<br>DRAWING NUMBER: 8700<br>DATE: 8/00<br>G:\ACLT\JOWEY\N\ |      |             |      |    |