


ITEM	PART #	QTY.	DESCRIPTION
1	KC-701	1	VALVE BODY
2	KC-702	1	DIFFUSER/ SEAL HOLDER
3	XXXX	#	XXXX
4	KC-710	1	BALL HOLDER ASSEMBLY
5	KC-711	1	WASHER, SEAL
6	KC-712	3	CUP POINT SOCKET SET SCREW
7	KC-713	1	SNAP-IN PLUG
8	KC-714	1	AIR CYLINDER BODY
9	KC-715	1	LABEL
10	KC-716	1	D-RING
11	KC-717	1	AIR PISTON
12	KC-718	1	D-RING
13	KC-719	1	RETAINING RING
14	KC-720	1	SEAL HOLDER
15	QAL07-34S	1	PUSH LOCK FITTING, 1/8" NPT X 1/4" TUBE, 90° ELBOW
16	F-02500695-SS	1	PLUG, SQUARE HEAD, 1/4" NPT, 304 SS
17	F-02500611-SS	1	HEX NIPPLE, 1/4" NPT, SS
18	F-02500550-SS	1	ELBOW, 1/4" NPT, 2000 PSI, SS
19	F-03750695-SS	1	HEX NIPPLE, 1/4" NPT X 3/8" NPT, SS
20	2222674	1	TIP GUARD & GASKET
21	XHD-XXX	1	TIP, AIRLESS (SEE CHART ON PAGE # 2)
22	KC-722	1	ADAPTER, GUN, DRIP-LESS GUARD
23	6033-2ALZ	1	GUN HANGER POST
24	6032	1	GUN HANGER
25	KC-721	1	TIP WASHER

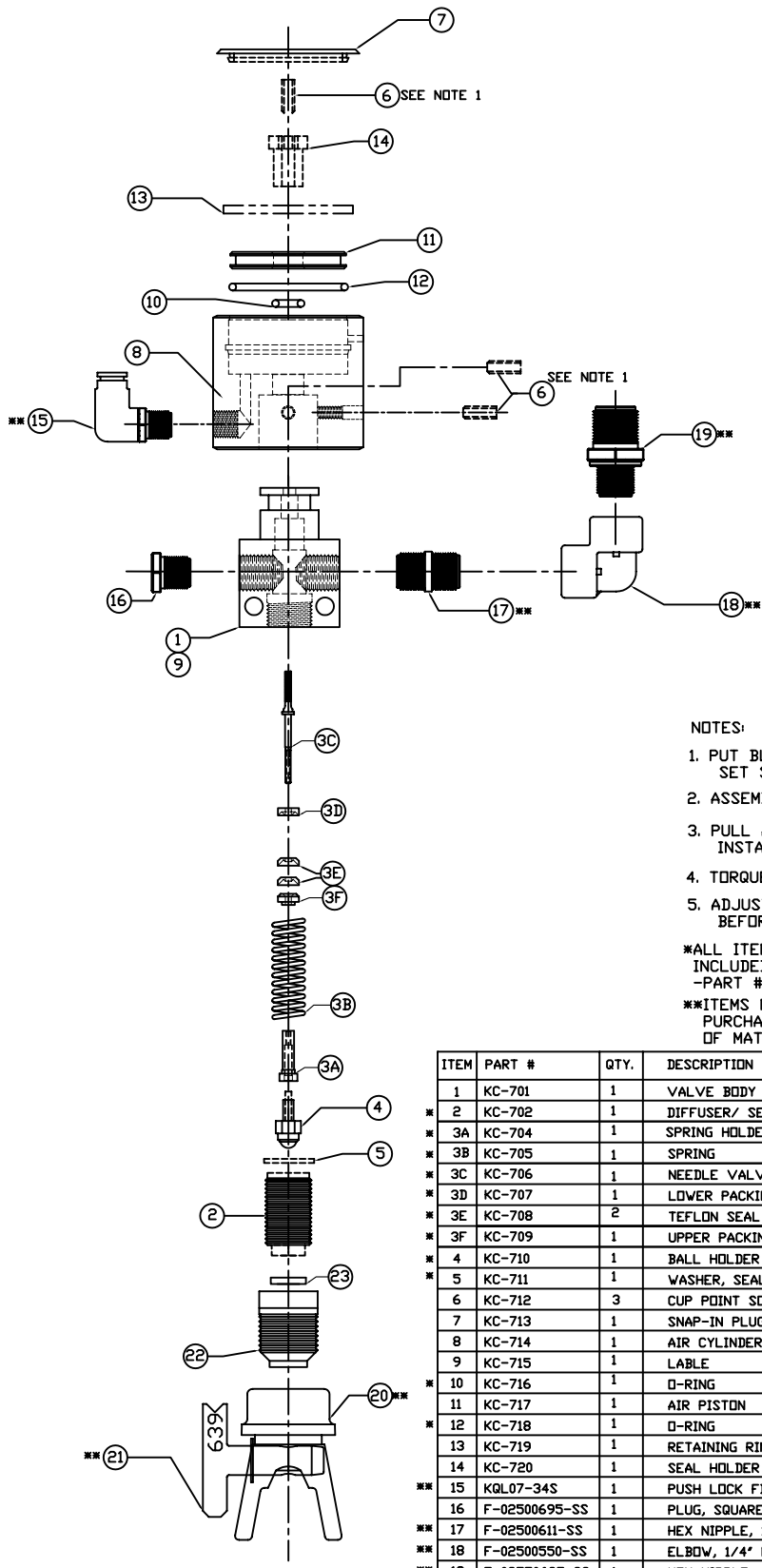
***ALL ITEMS MARKED WITH A ASTERISK ARE INCLUDED IN THE KC-700 REPAIR KIT. -PART # KC-700-RBK

***ITEMS NOT INCLUDED WITH GUN, MUST PURCHASE SEPARATELY. SEE BILL OF MATERIALS FOR PART NUMBERS

TOLERANCES UNLESS OTHERWISE SPECIFIED:
 Angular ±2°
 Fractional ±1/16"
 X = ±.1
 XX = ±.01
 XXX = ±.005
 XXXX = ±.0015

CONFIDENTIAL
 THIS DOCUMENT INCLUDING ALL INFORMATION HEREIN IS THE EXCLUSIVE AND CONFIDENTIAL PROPERTY OF ERNEST INDUSTRIES. THIS DOCUMENT IS NOT TO BE COPIED, REPRODUCED, OR DELIVERED TO OTHERS WITHOUT PERMISSION OF ERNEST INDUSTRIES.

Kelly-Creswell 1221 Groop Rd Springfield, OH 45504 937-282-3978  Since 1937	TITLE: KC-700 SPRAY GUN ASSEMBLY
DRAWN BY: CDV	DESCRIPTION: KC-700 DETAILS
DATE: 5-28-10	DWG NO./PART NO.: KC-700
APPROVED BY:	SCALE: N/A
DATE APPROVED:	SIZE: B
PAGE #: 1-4	REV: A



NOTES:

1. PUT BLUE LOCTITE ON CUP POINT SOCKET SET SCREW (ITEM 6).
2. ASSEMBLE ITEM 3 PER SPEC
3. PULL AWAY BALL (ITEM 4) BEFORE INSTALLING SEAL HOLDER (ITEM 2).
4. TORQUE ITEM 2 TO 25 FT.LB
5. ADJUST ITEM 11 TO MID-POSITION BEFORE LOCKING WITH ITEM 6.

*ALL ITEMS MARKED WITH A ASTERISK ARE INCLUDED IN THE KC-700 REPAIR KIT. -PART # KC-700-RBK

**ITEMS NOT INCLUDED WITH GUN. MUST PURCHASE SEPERATLY. SEE BILL OF MATERIALS FOR PART NUMBERS

ITEM	PART #	QTY.	DESCRIPTION
1	KC-701	1	VALVE BODY
*	2	1	DIFFUSER/ SEAL HOLDER
*	3A	1	SPRING HOLDER
*	3B	1	SPRING
*	3C	1	NEEDLE VALVE SPRING
*	3D	1	LOWER PACKING NUT
*	3E	2	TEFLON SEAL PACKING
*	3F	1	UPPER PACKING NUT
*	4	1	BALL HOLDER ASSEMBLY
*	5	1	WASHER, SEAL
6	KC-712	3	CUP POINT SOCKET SET SCREW
7	KC-713	1	SNAP-IN PLUG
8	KC-714	1	AIR CYLINDER BODY
9	KC-715	1	LABLE
*	10	1	O-RING
*	11	1	AIR PISTON
*	12	1	O-RING
13	KC-719	1	RETAINING RING
14	KC-720	1	SEAL HOLDER
**	15	1	PUSH LOCK FITTING, 1/8" NPT X 1/4" TUBE, 90° ELBOW
16	F-02500695-SS	1	PLUG, SQUARE HEAD, 1/4" NPT, 304 SS
**	17	1	HEX NIPPLE, 1/4" NPT, SS
**	18	1	ELBOW, 1/4" NPT, 2000 PSI, SS
**	19	1	HEX NIPPLE, 1/4" NPT X 3/8" NPT, SS
**	20	1	TIP GUARD & GASKET (SEE CHART ON PAGE 2)
**	21	1	TIP, AIRLESS (SEE CHART ON PAGE 2)
22	KC-722	1	ADAPTER, GUN, DRIP-LESS GUARD
23	KC-721	1	TIP WASHER

TOLERANCES UNLESS OTHERWISE SPECIFIED:
 Angular ±2°
 Fractional ±1/16"
 .X= ±1
 .XX=±.01
 .XXX=±.005
 .XXXX=±.0015

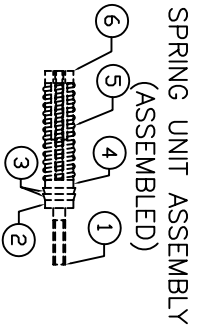
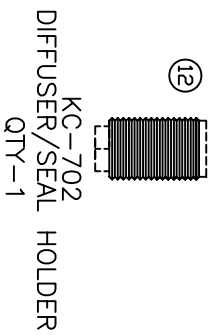
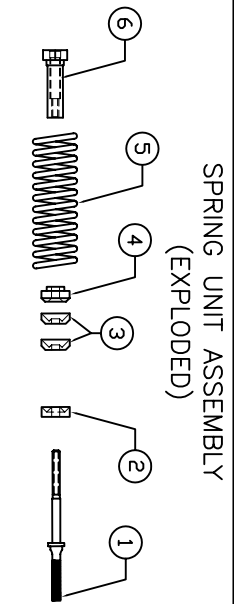
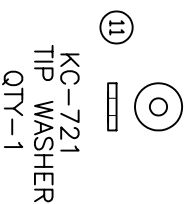
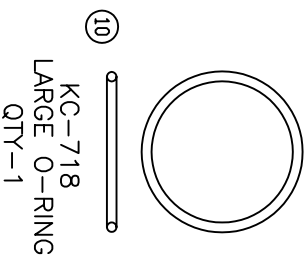
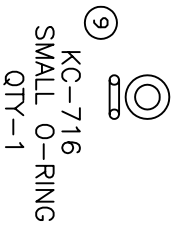
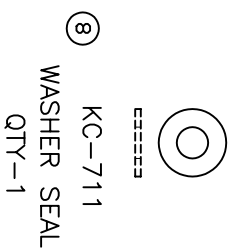
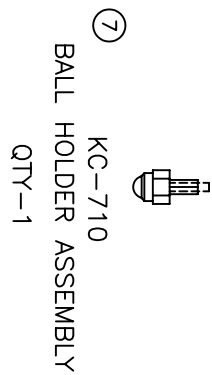
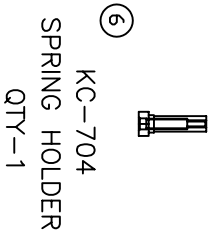
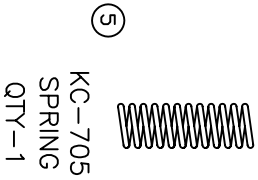
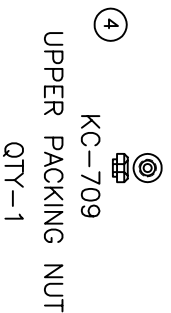
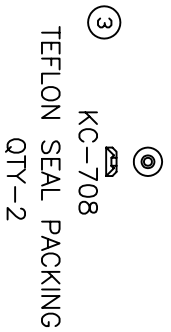
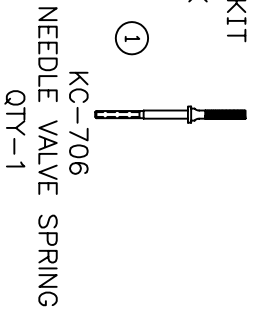
CONFIDENTIAL
 THIS DOCUMENT, INCLUDING ALL INFORMATION HEREIN, IS THE EXCLUSIVE AND CONFIDENTIAL PROPERTY OF ERNEST INDUSTRIES. THEREFORE THIS DOCUMENT IS NOT TO BE COPIED, REPRODUCED, OR DELIVERED TO OTHERS WITHOUT THE EXPRESS WRITTEN PERMISSION OF ERNEST INDUSTRIES.

Kelly-Creswell
 1221 Groop Rd.
 Springfield, OH 45504
 937-323-9978
KC Since 1937

DRAWN BY: CDW
 DATE: 5-28-10
 APPROVED BY: [Signature]
 DATE APPROVED: [Signature]

TITLE: KC700 SERIES ASSEM EXPLODED
 DESCRIPTION: 700 SERIES GUN
 DWG NO./PART NO. KC-700
 SCALE: N/A
 SIZE: B
 PAGE #: 2-4
 REV: A

KC-700 REBUILD KIT
PN - KC-700-RBK



TOLERANCES UNLESS OTHERWISE SPECIFIED:
Angular ±2°
Fractional ±1/16"
X = ±.1
XX = ±.01
XXX = ±.005
XXXX = ±.0015

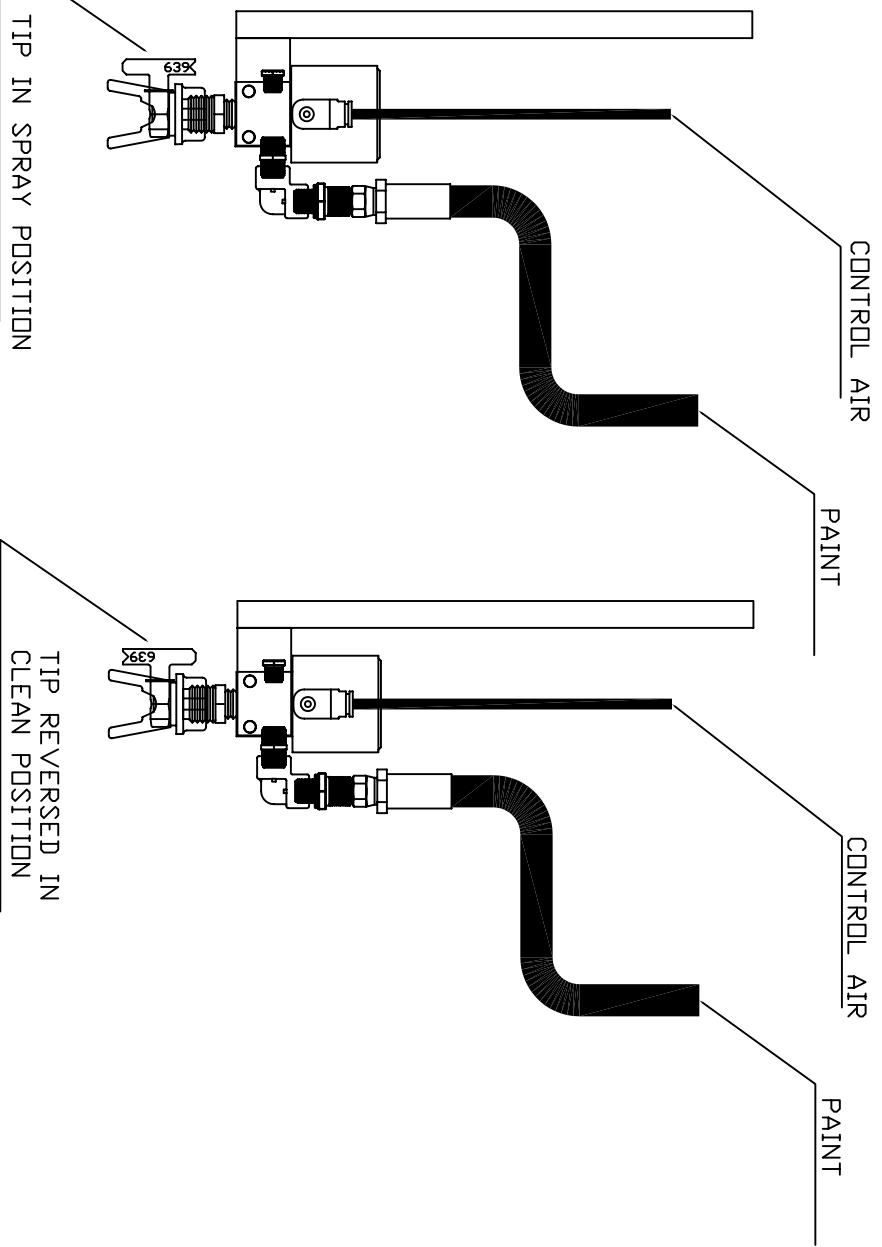
CONFIDENTIAL
THIS DOCUMENT INCLUDING ALL INFORMATION HEREIN IS THE EXCLUSIVE AND CONFIDENTIAL PROPERTY OF ERNEST INDUSTRIES. THIS DOCUMENT IS NOT TO BE COPIED, REPRODUCED, OR DELIVERED TO OTHERS WITHOUT PERMISSION OF ERNEST INDUSTRIES.

Kelly-Creswell
1221 Groop Rd.
Springfield, OH 45504
937-389-3979
Since 1937

DRAWN BY: CDV
APPROVED BY: [Signature]

DATE: 8-27-10
DATE APPROVED: [Signature]

TITLE: KC-700
DESCRIPTION: REBUILD KIT
DWG NO./PART NO.: KC-700-RBK
SCALE: N/A
SIZE: B
PAGE #: 3-4
REV: A



TOLERANCES UNLESS OTHERWISE SPECIFIED:
 Angular ±2°
 Fractional ±1/16"
 X = ±.1
 XX = ±.01
 XXX = ±.005
 XXXX = ±.0015

CONFIDENTIAL
 THIS DOCUMENT INCLUDING ALL INFORMATION HEREIN IS THE EXCLUSIVE AND CONFIDENTIAL PROPERTY OF ERNEST INDUSTRIES. THE REPRODUCTION OR REPRODUCTION OF THIS DOCUMENT IS NOT TO BE COPIED, DELIVERED, OR REPRODUCED WITHOUT PERMISSION OF ERNEST INDUSTRIES.

Kelly-Creswell
 1221 Groop Rd.
 Springfield, OH 45504
 937-388-3978
 Since 1997

TITLE: KC-700 SPRAY GUN ASSEMBLY
 DESCRIPTION: KC-700 DETAILS
 DWG NO./PART NO. KC-700
 SCALE: N/A
 SIZE: B
 PAGE #: 4-4
 REV: A

PORTABLE MACHINE TIPS (KC-700)	
TIP NUMBER	LINE SIZE AND RECOMMENDED USAGE
HDP1-203	2" ATHLETIC LINE AND SMALL STENCILS
HDP1-211	2-4" ATHLETIC LIGHT FILM THICKNESS
HDP1-217	4-6" LINE (MEDIUM FILM THICKNESS)
HDP1-219*	4-6" LINE (NORMAL FILM THICKNESS)
HDP1-315	4-8" LINE/CURBS/STENCILS (LIGHT FILM THICKNESS)
HDP1-317	4-8" LINE/CURBS/STENCILS (MEDIUM FILM THICKNESS)
HDP1-319	4-8" LINE/CURBS/STENCILS (NORMAL FILM THICKNESS)
HDP1-517*	10-12" GENERAL SPRAYING AND LARGE STENCILS
HDP1-621	10-14" STOP BARS/STENCILS (HEAVY FILM THICKNESS)
HDP1-721	12-14" STOP BARS/STENCILS/24" LINE W/ 2 GUNS
HDP1-725	12-14" STOP BARS/STENCILS/24" LINE W/ 2 GUNS (HEAVY FILM)
HDP1-01	TIP GUARD

*INCLUDED WITH EACH GUN INSTALLED ON A PORTABLE STRIPPER

TRUCK MOUNTED MACHINE TIPS (KC-700)				
TIP NUMBER	MINOR	MAJOR	DRIFTCRACK SIZE (IN)	MIL THICKNESS
XHD-437	4"	8"	.037"	15
XHD-439	4"	8"	.039	15
XHD-443	4"	8"	.043"	15
XHD-447	4"	8"	.047"	15
XHD-449	4"	8"	.049"	15
XHD-451	4"	8"	.051"	15
XHD-455	4"	8"	.055"	15
XHD-461	4"	8"	.061"	15
XHD-651	6"	12"	.051"	15
XHD-739	7"	14"	.039"	15
XHD-751	7"	14"	.051"	15
XHD-001	TIP GUARD			