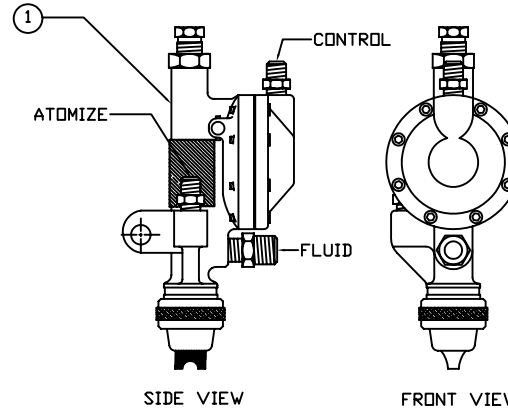
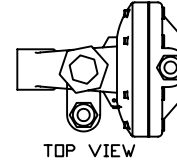


EXPLODED ASSEMBLY VIEW (SIDE)



ITEM	QTY	PART NO	DESCRIPTION
1	1	KC-593-SS	STRIPING GUN
1A	1	KC-119	FRAME
*	2	KC-110	NEEDLE PACKING (SET OF 2)
3	1	KC-109	PACKING NUT
4	1	KC-111	PACKING GLAND COVER
5	1	KC-113	TRIGGER PIN
*	6	KC-106	NEEDLE,SS
7	1	KC-104	SPRING GUIDE
8	1	KC-102	LOCKING NUT
9	1	KC-101	ADJUSTING SCREW
*	10	KC-103	SPRING, NEEDLE
11	1	KC-105	NEEDLE ADJUSTMENT STOP
12	1	KC-114	SPRING COTTER PIN
13	1	KC-112	TRIGGER
14	1	KC-115	DIAPHRAGM PLATE & PIN
15A	2	H-2008	NIPPLE, BRASS, 1/4 X 1/4 NPT
15B	2	KQH07-35S	PUSH LOCK FITTING, 1/4T X 1/4P
16	8	KC-118	DIAPHRAGM SCREWS
*	17	KC-116	DIAPHRAGM
18	1	F-03750695-SS	ADAPTER, FLUID INLET, 1/4 X 3/8 NPT
*	19	AV-1	GASKET FLUID TIP
**	20	WV-172-4M	AIR CAP ADAPTER
**	21	WV-173	AIR CAP RETAINING HOOD
**	22	AV-11	RETAINING NUT, KNURLED
**	23	S-26	AIR CAP,(HARDENED) 3-6" LINE
**	23A	S-24	AIR CAP,(HARDENED) 6-9" LINE
*	24	WV-1115-SS	FLUID TIP 11/64
25	1	WV-94	ADAPTER, FLUID TIP
26	1	MB-47	LOCATING PIN
27	1	KC-117	DIAPHRAGM COVER

NOTE:

1. (\*) INCLUDED IN  
NEEDLE REPAIR KIT PART  
NUMBER KC-143

2. (\*\*) INCLUDED IN TIP  
REPAIR KIT PART NUMBER  
KC-145

TOLERANCES UNLESS OTHERWISE SPECIFIED:  
Angular  $\pm 2^\circ$   
Fractional  $\pm 1/16"$   
.X =  $\pm 1$   
.XX =  $\pm 0.01$   
.XXX =  $\pm 0.005$   
.XXXX =  $\pm 0.0015$

CONFIDENTIAL  
THIS DOCUMENT, INCLUDING ALL INFORMATION HEREIN, IS THE EXCLUSIVE AND CONFIDENTIAL PROPERTY OF ERNEST INDUSTRIES. THEREFORE THIS DOCUMENT IS NOT TO BE COPIED, REPRODUCED, OR DELIVERED TO OTHERS WITHOUT THE EXPRESS WRITTEN PERMISSION OF ERNEST INDUSTRIES.

Kelly-Creswell  
1221 Groop Rd.  
Springfield, OH 45504  
937-325-3978  
**KC** Since 1937

DRAWN BY  
CDW

DATE  
5-25-10

APPROVED BY

DATE APPROVED

TITLE:  
KC-593-SS

DESCRIPTION:  
STRIPING GUN SS

DWG NO./PART NO.  
KC-593-SS

SCALE: N/A

SIZE: A

PAGE #: 1-2

REV: A

NEEDLE REPAIR KIT PART  
NUMBER KC-143



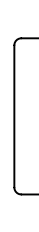
KC-110  
NEEDLE PACKING (SET OF 2)  
QTY-1



KC-106-SS  
NEEDLE, KC-593 STAINLESS STEEL  
QTY-1



KC-103  
SPRING, NEEDLE  
QTY-1



KC-116  
DIAPHRAGM  
QTY-1



AV-1  
GASKET FLUID TIP  
QTY-1



WV--1115-SS  
ADAPTER, FLUID TIP  
QTY-1

TIP REPAIR KIT PART  
NUMBER KC-145



WV-172-4M  
AIR CAP ADAPTER  
QTY-1



WV-173  
AIR CAP RETAINING HOOD  
QTY-1



AV-11  
RETAINING NUT, KNURLED  
QTY-1



S-26  
AIR CAP,(HARDENED) 3-6" LINE  
QTY-1

TOLERANCES UNLESS OTHERWISE SPECIFIED:  
Angular  $\pm 2^\circ$   
Fractional  $\pm 1/16'$   
.X =  $\pm 1$   
.XX =  $\pm 0.1$   
.XXX =  $\pm 0.005$   
.XXXX =  $\pm 0.0015$

CONFIDENTIAL  
THIS DOCUMENT, INCLUDING ALL INFORMATION HEREIN, IS THE EXCLUSIVE AND CONFIDENTIAL PROPERTY OF ERNEST INDUSTRIES. THEREFORE THIS DOCUMENT IS NOT TO BE COPIED, REPRODUCED, OR DELIVERED TO OTHERS WITHOUT THE EXPRESS WRITTEN PERMISSION OF ERNEST INDUSTRIES.

Kelly-Creswell  
1221 Groop Rd.  
Springfield, OH 45504  
937-325-3978



DRAWN BY  
CDW

DATE  
7-14-10

APPROVED BY

DATE APPROVED

TITLE:

KC-593-SS

DESCRIPTION:

KC-143/KC-145 REBUILD KITS

DWG NO./PART NO.

KC-593-SS

SCALE:  
N/A

SIZE:  
A

PAGE #:  
2-2

REV:  
A